



MALAHIDE

Malahide Community Forum

NISA Planning Application
Comments – July 2024



The Malahide Community Forum is the umbrella group for all the residents' associations in Malahide (Co. Dublin, Ireland).

We are concerned with the social, cultural, educational, environmental and economic well-being of our community. These include issues like planning of major developments, access and transport within the area, services, and safety of residents. We represent the interests of residents to the relevant authorities, such as the County Council, the Gardaí, transport companies and other service providers.

Your local residents' association should deal with issues specific to your street or estate and we can provide support and guidance on the what, how and who of doing so.

The background



- **What's Happening?** A proposed offshore wind farm between Balbriggan and Skerries is proposing to bring electrical cables ashore at Bremore in Balbriggan. The operator is planning to lay huge electrical cables along main roads from Bremore all the way to join up with the electrical grid operated by Eirgrid at Balgriffin.
- **How long will this cable laying take?** The operator has set out a timetable of 56 weeks for the works between Swords and Malahide. In reality, that's a "best-efforts" assumption and seems highly optimistic. Realistically, we think it could take 1.5 years.
- **Why are we concerned?** As outlined in their planning application, the windfarm operator proposes to lay these cables along busy main roads, thus diverting traffic onto smaller roads that run close to schools and residential areas. This poses significant issues for people getting to work or getting flights in the Airport, school children from Seabury going to local Malahide schools, bus traffic, cyclists and pedestrians.

NISA's Proposed Road Closures



Route Section	Road	Closure Type	Approx. Duration of Closure (Pre-mitigation)
10	10.1 Estuary Road	Full (Temporary duration)	5-6 weeks
	10.2 Estuary Road	Full (Temporary duration)	11-12 weeks
11	Estuary Road	Partial (Temporary duration)	5 weeks (this overall duration will be made up of sequential~200m partial closures along full section)
12	R106 Swords Road	Full (Temporary duration)	6-7 weeks
13	R107 Malahide Road	Full (Temporary duration)	10-11 weeks
14A	R107 Malahide Road	Full (Temporary duration)	1-2 weeks
14B	1. Chapel Road	Full (Temporary duration)	6-7 weeks
	2. R124 Drumnigh Road	Full (Temporary duration)	7-8 weeks
	3. Balgriffin Park	Full (Temporary duration)	1-2 weeks
15	R139	Partial (Temporary duration)	16 weeks

Selected Proposed Road Closures



MALAHIDE



Selected Proposed Road Closures



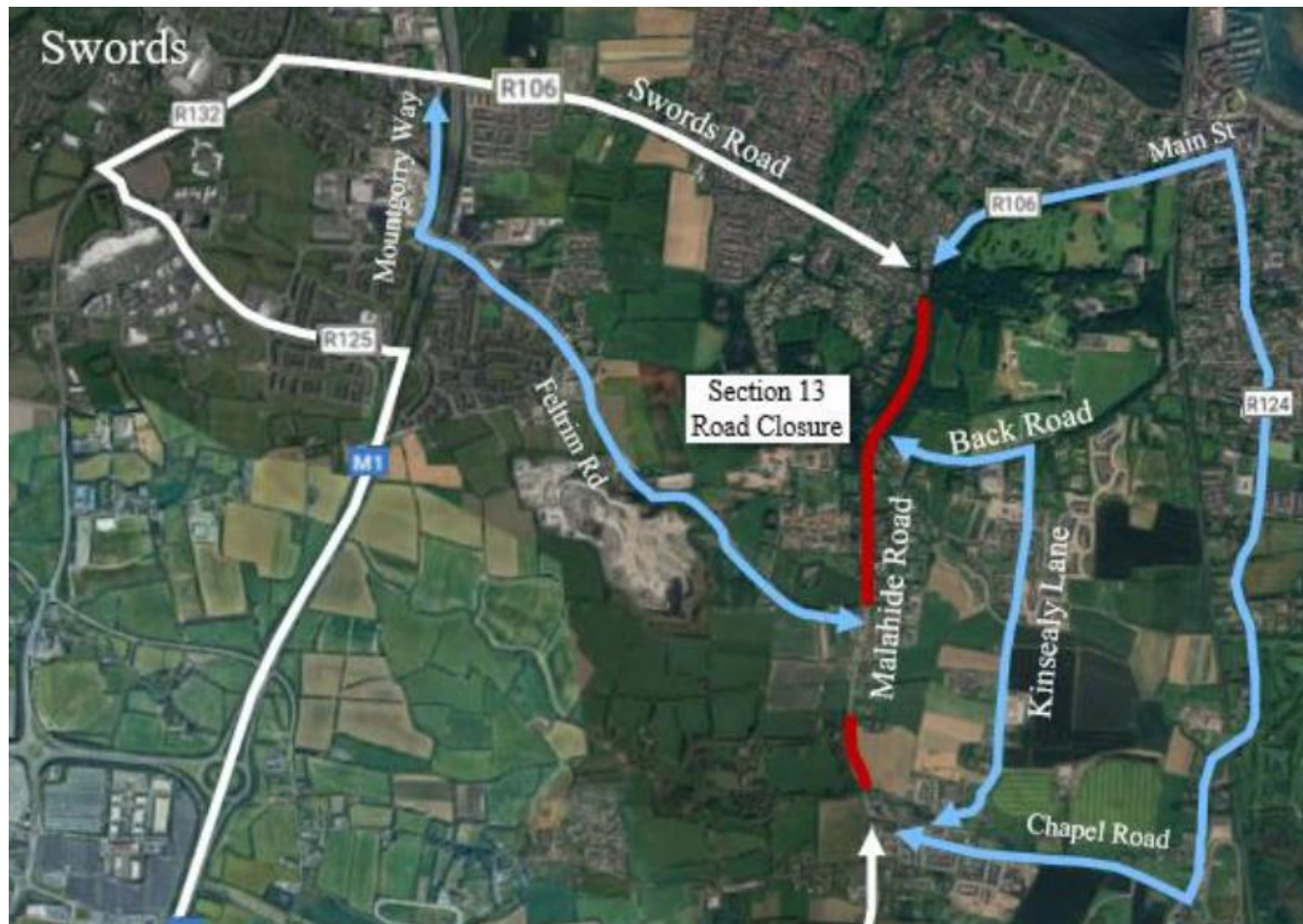
MALAHIDE



Selected Proposed Road Closures



MALAHIDE



MCF's Proposal



- Route the cables from the Estuary at the Rugby Club, then alongside Seabury, across the Sword's Rd, to land zoned for the development of a medical facility, for Epilepsy Ireland, then along field boundaries to the Feltrim Rd. adjoining the entrance to Roadstone's quarry. Then around the quarry and along field boundaries to meet up with Eirgrid's proposed cross country cable route adjoining the M1 crossing.
- The overall route length would be approx. 8.5km, vs 9.5km by road and would involve only 5km of new routing.
- A number of landowners along the proposed route have already indicated their preparedness to facilitate the development, in principle.
- It could be completed in as little as three months as it is shorter, and not subject to traffic constraints. The cable could be laid in the ground in 750 m lengths at a time, does not require the installation of ducts or the removal of excavated material from site and does not have to deal with the complexities caused by other services

MCF's Proposed Route (1)



Imagery ©2024 Airbus, CNES / Airbus, Maxar Technologies, Map data ©2024 Google 200 m

Measure distance
Total distance: 8.25 km (5.13 mi)

MCF's Proposed Route



Imagery ©2024 Airbus, CNES / Airbus, Landsat / Copernicus, Maxar Technologies, Map data ©2024 Google 200 m

Measure distance
Total distance: 8.25 km (5.13 mi)

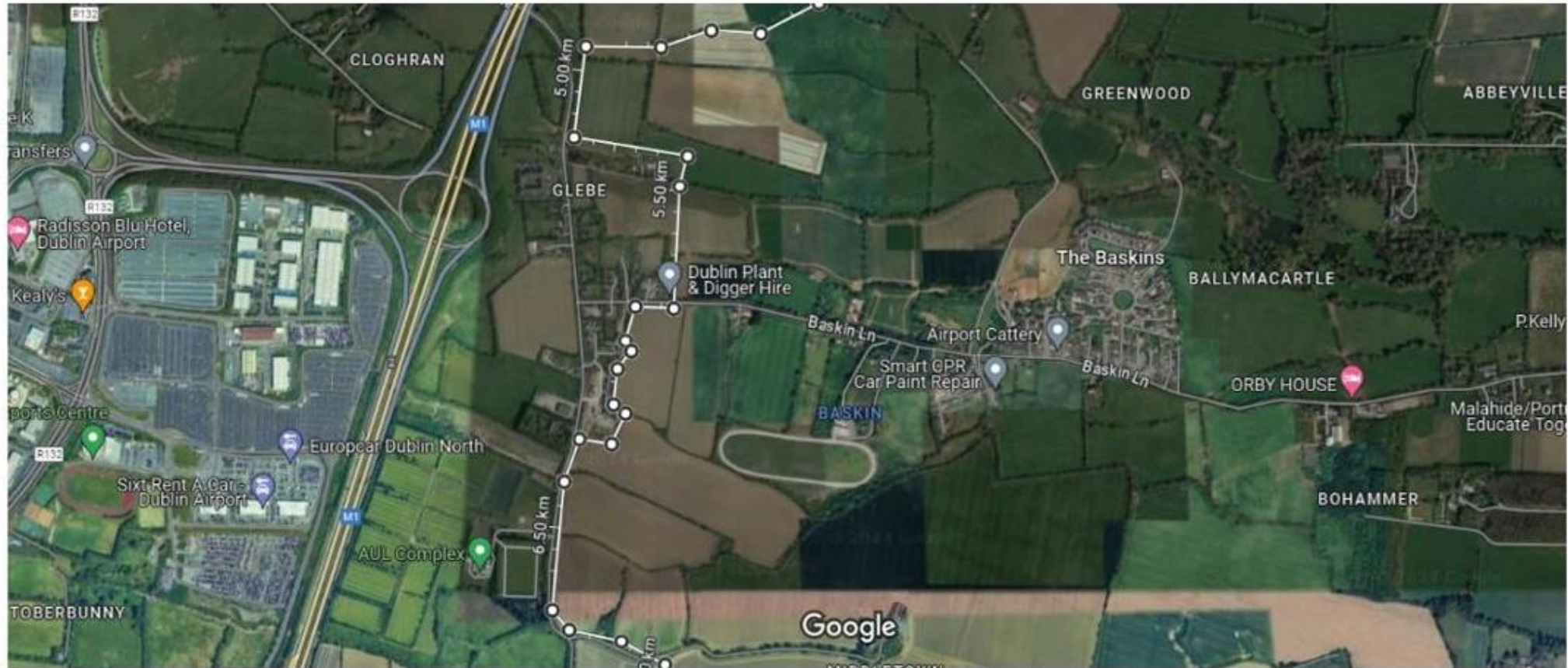
MCF's Proposed Route



Imagery ©2024 Airbus, CNES / Airbus, Maxar Technologies, Map data ©2024 Google 200 m

Measure distance
Total distance: 8.25 km (5.13 mi)

MCF's Proposed Route



Imagery ©2024 Airbus, CNES / Airbus, Maxar Technologies, Map data ©2024 Google 200 m

Measure distance
Total distance: 8.25 km (5.13 mi)

MCF's Proposed Route



Imagery ©2024 Airbus, CNES / Airbus, Maxar Technologies, Map data ©2024 Google 200 m

Measure distance
Total distance: 8.25 km (5.13 mi)

NISA's concerns re MCF's Proposal



- **“Eirgrid won’t allow cross-country cabling”** – historically true, but this viewpoint may be changing. According to EirGrid themselves, their “Powering Up Dublin” envisages three high-voltage underground cable circuits and while much of the cabling will be placed under public roads, the three routes selected *"make use of substantial off-road sections to help minimise disruption"*. Additionally, Eirgrid note that *“the Customer may propose routing cables on private land, subject to a design review and acceptance by EirGrid.”*
- **“Difficult to negotiate with many different private landowners”** – NISA state that “in the order of 27 parcels of land within 14 different land folios and 18 landowners could require engagement depending on the route of the cable.” Malahide Community Forum believes, based on our research, that the number of landowners is lower. Informal contacts with at least 4 of the largest landowners have all indicated a willingness to engage with NISA in discussions regarding access to land.

MCF's Plan



- We will make a detailed submission to An Bord Planala, including the possibility of seeking an oral hearing.
- We are contacting local councillors with a view towards influencing the submission of FCC's Planning department to An Bord Planala.
- **We are asking, by resolution of the councillors, that recommendations are attached to FCC CEO's Report.** In MCF's opinion, an alternative has been found that prevents full road closures & significant diversions in the course of laying of cables. The CEO should also recommend that NISA engage in discussions with regard to preventing / minimising any associated environmental, economic and social costs, and to ensure that disruptions to the public road network around Malahide are minimised.

Contact details / social media details

- Chair – David Greene
(davidakgreene1966@gmail.com)
- Hon Sec – Jonathan Law
(secretary.malahideforum@gmail.com)
- Website – <https://malahidecommunityforum.ie/>
- Facebook page -
<https://www.facebook.com/MalahideCommunityForum>

Malahide Community Forum

Making Malahide Better



Malahide Community Forum

95 likes • 139 followers



[Message](#) [Liked](#) [Search](#)